

Warning System Devices

Addressable Integrated Base Sounder IBSOU-DD-P01

• Melbourne

Unit B2
2A Westall Rd
Springvale
VIC 3171
Tel (03) 9562 7577
Fax (03) 9562 8044
sales.vic@pertronic.com.au

• Sydney

Unit 19
287 Victoria Rd
Rydalmere
NSW 2116
Tel (02) 9638 7655
Fax (02) 9638 7688
sales.nsw@pertronic.com.au

• Brisbane

Unit 3
23 Anthony St
West End
QLD 4101
Tel (07) 3255 2222
Fax (07) 3255 1122
sales.qld@pertronic.com.au

• Adelaide

65 Manton St
Hindmarsh
SA 5007
Tel (08) 8340 9533
Fax (08) 8340 9544
sales.sa@pertronic.com.au

www.pertronic.com.au

The new Integrated Base Sounder has System Sensor analogue addressable protocol embedded. It has been designed to significantly reduce the total cost of installation. Product performance has been optimised to allow the maximum permissible number of devices to be installed on an intelligent loop.

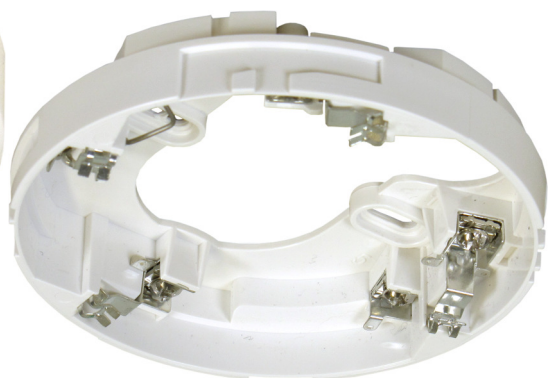
By utilising the latest developments in piezoelectric transducer technology, the Integrated Detector Base Sounder is highly efficient. Current consumption is minimised, enabling the maximum number of devices to be installed on a loop, without compromising on sound output levels. The Integrated Detector Base Sounder is supplied with 32 tones and high, medium and low volume settings, which are selectable by DIL switch.

Features:

- Fully loop powered
- Reduces the total cost of installation
- Common installation base with other sounders/strobes in the range
- Single point of installation for detector and sounder
- Sounder uses a separate module address
- Simple commissioning procedure
- Optimised performance increases amount of devices on an intelligent loop
- Fault finding simplified
- Shorting spring in base for continuity testing
- Anti-tamper feature in mounting base
- Three volume settings
- 32 tones available, including ISO8201 (T3)



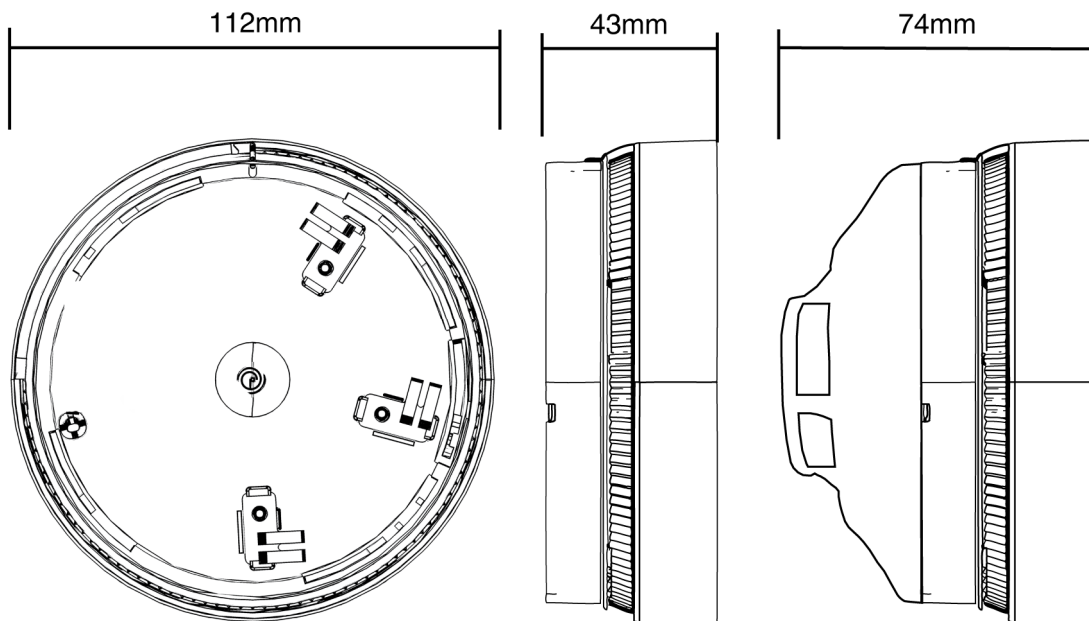
**Integrated Base Sounder
IBSOU-DD-P01 + detector**



**Low Profile Base
LPBW**

Specifications:

- 🔌 Operating Voltage: 15 to 32VDC
- 🔌 Standby Current: 110µA
- 🔌 Max current consumption (loop supply average = 15V)
 - High Volume, Tone 5 @15V: 10.6mA
 - High Volume, Tone 19 @15V: 8.1mA
 - High Volume, Tone 21 @15V: 4.9mA
- 🔌 Max Output Power
 - High Volume, Tone 8: 94dB(A) +/- 3dB @ 1m (970Hz continuous)
 - High Volume, Tone 19: 83dB(A) +/- 3dB @ 1m (950Hz ISO8201 T3)
 - High Volume, Tone 21: 81dB(A) +/- 3dB @ 1m (400-1200Hz ISO8201 T3)
- 🔌 Operating Temperature: -25°C to 70°C
- 🔌 Humidity: 0 to 95% RH, non-condensing
- 🔌 Ingress Protection: IP24 (with low profile base)
- 🔌 Colour: Pantone warm grey 1C (matching detector colour)
- 🔌 Weight: 134g
- 🔌 Terminal Size: 1.5 - 2.5mm²
- 🔌 Number of Tones: 32
- 🔌 Volume Setting: High, Medium, and Low



Ordering Information:

Description

Addressable Detector Base Sounder, White
Low Profile Base – Loop Sounder/Strobe

Part Number

IBSOU-DD-P01
LPBW

PERTRONIC INDUSTRIES PTY LTD

Melbourne

Unit B2
2A Westall Rd
Springvale VIC 3171
Telephone: (03) 9562 7577
Fax: (03) 9562 8044
sales.vic@pertronic.com.au

Sydney

Unit 19
287 Victoria Rd
Rydalmere NSW 2116
Telephone: (02) 9638 7655
Fax: (02) 9638 7688
sales.nsw@pertronic.com.au

Brisbane

Unit 3
23 Anthony Street
West End Qld 4101
Telephone: (07) 3255 2222
Fax: (07) 3255 1122
sales.qld@pertronic.com.au

Adelaide

Unit 3
65 Mantor Street
Hindmarsh 5007
Telephone: (08) 8340 9533
Fax: (08) 8340 9544
sales.sa@pertronic.com.au