

INSTALLATION NOTE

Loop Responder (For PCB versions 3.06 and greater)

Overview

The Loop Responder is used to interface zones of conventional detectors into Pertronic analogue addressable fire alarm systems. Other uses include monitoring the interference switches of sprinkler valves, reading the fault and alarm status from Vesda systems, or receiving commands from a SCADA system.

Additionally, the Loop Responder has a set of clean change-over contacts that can be controlled by the panel and mapped as a loop relay.

The Loop Responder uses 9 module loop addresses, the first eight for input circuits 1 to 8 and the ninth for the relay.

A limited number of Loop Responders may be powered from the loop. When more loop responders are required, they may be powered from a supply or supplies that must be electrically isolated from the panel supply and the power supplies must not be shared between loops.

Installation

Figure 1 below shows the connector layout of the loop responder.

For details on setup and configuration, please see the "Loop Responder Technical Manual", available from the Pertronic web site.

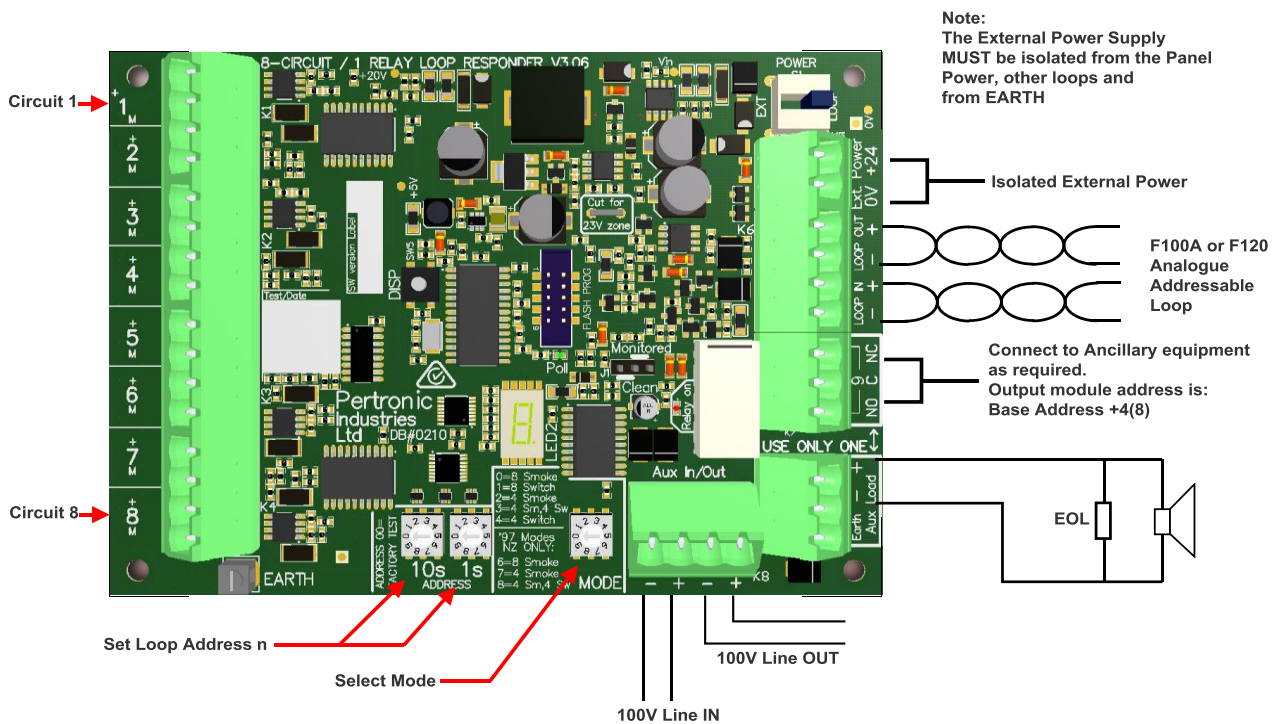


Figure 1