



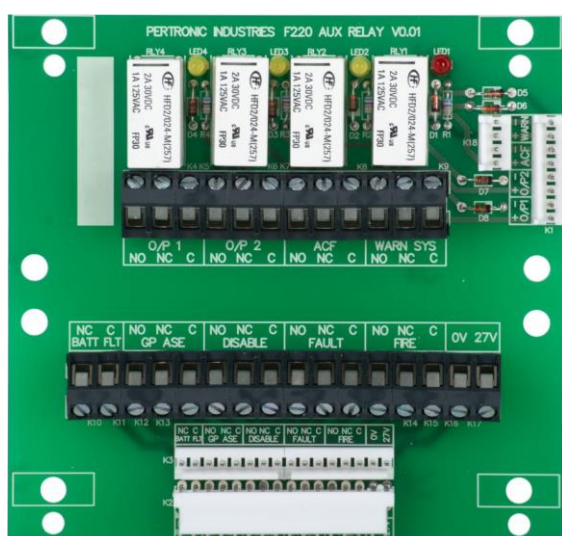
# F220 Auxiliary Relay Boards

## Product Overview:

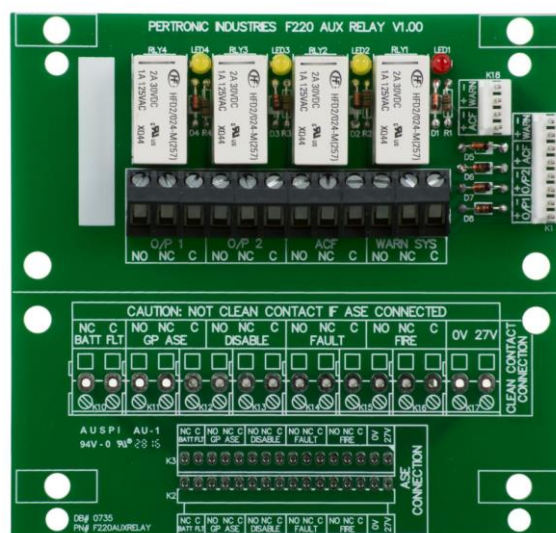
The **F220 Aux Relay board F220AUXRLY** provides four relays with single non-monitored contact outputs. These relays operate by direct connection to the Output 1, Output 2, ACF and Warning System outputs on the **F220 Main PCB Assembly**.

In addition connection terminals provide alternative connection for Alarm Signalling Equipment (ASE).

This enables the F220 to be compatible with a wide range of ASE / transmitter connection requirements.



Relay & ASE Interconnect Board  
(F220AUXRLY)



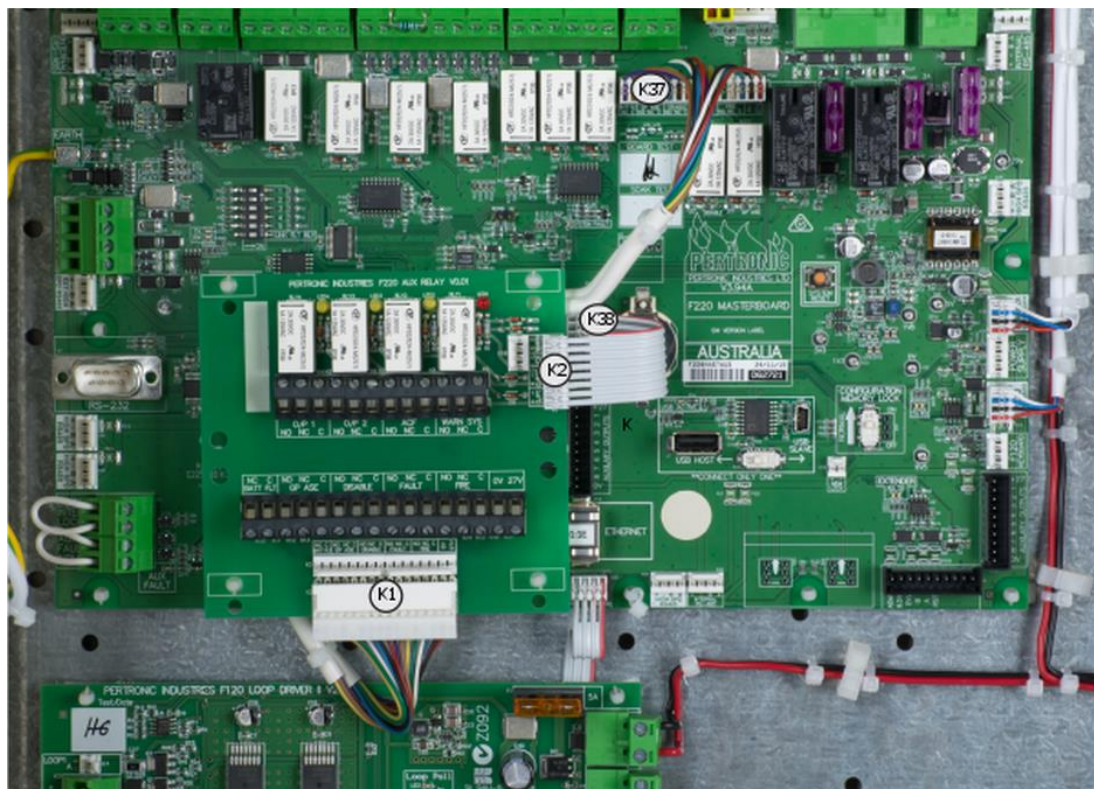
4 Way Relay Board  
(F220AUX-4RLY)

## Features:

- » Footprint and connector designed to accept piggy back mounted 8 way open collector relay board (8WCOMR)
- » Converts four (WARN SYS, ACF, Output 1 and Output 2) monitored relay outputs to single pole Type C clean contacts
- » LED indicators for each relay, lights are ON if relays are active (Red: WARN SYS, Yellow: Others)
- » **F220AUXRLY** provides isolated relay contacts for external Alarm Signalling Equipment (ASE)
- » If ASE connected to K10 - K17, monitoring Voltage / Currents may be present on K10 - K17

## Specifications:

- » PCB Dimensions 104 x 98 mm L x W
- » Operating Voltage 18 - 30 Vdc
- » Operating Current 12 mA per activated relay @ 27.4 Vdc
- » Relay Contacts 2 A @ 30 Vdc Form C



**F220AUXRLY Board Installed in an F220 Fire Alarm Control Panel**

## Connection:

F220AUXRLY Board	F220 Master Board
K1	K37
K2	K38

## Ordering Information:

Product Code	Description
F220AUXRLY	F220 Auxiliary Relay & ASE Interconnect Board V1.00
F220AUX-4RLY	F220 Auxiliary 4 Way Relay Board

0735 F220 Auxiliary Relay Board Iss 1.1 20161209