

L-VWM06A/EN(C)&582478 L-VWM06A/EN&582470 Cabinet Loudspeaker

* L-VWM06A/EN(C)&582478 is supplied with capacitor for line monitoring



This loudspeaker is a high-performance 6 W voice alarm cabinet loudspeaker. It provides a broad frequency response range, low distortion and high sound pressure level for accurate and intelligible broadcast of evacuation messages and high quality sound reproduction. It's ideal for sound distribution in various types of commercial buildings. Its low-profile, white color design blends easily with most interiors in locations such as hotels, conference rooms, cinemas, factories and exhibitions.

This voice alarm cabinet loudspeaker complies with BS 5859 part 8 and EN54 part 24.

Technical Specifications

Electrical

Max power	9 W
Rated power	6 W
Power tapping	6 W / 3 W / 1.5 W / 0.75 W
Sensitivity (1W/4m,100Hz~10kHz)	79 dB
SPL(1W/1m,100Hz~10kHz)	91 dB
SPL(6W/4m,100Hz~10kHz)	86 dB
Frequency response (-10 dB)	300 Hz ~ 15k Hz
Rated input voltage	100 V / 70 V
Rated impedance	1.7k Ω / 3.3k Ω / 6.7k Ω / 13k Ω
Connection	Ceramic terminal

Mechanical

Dimensions	170 mm x 170 mm x 63 mm
Weight	1.56 kg
Color	RAL9003
Speaker size	4"

Environmental

Operating temperature	-25°C to +55°C
Storage temperature	-40°C to +70°C
Relative humidity	<95%

* The reference axis is perpendicular to the centre point of the front grille
 * The reference plane is perpendicular to the centre of the reference axis
 * The horizontal plane is perpendicular to the centre of the reference plane
 * The spec/data was measured using a standard baffle mounting in an anechoic chamber as described in EN54-24



0359
12

0359-CPR-00174

- Intelligible voice and superior sound reproduction
- Robust metal enclosure
- Harmonious with all indoor decoration
- Simple power setting
- Easy installation
- Complies with EN54-24 standard

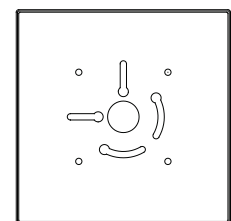
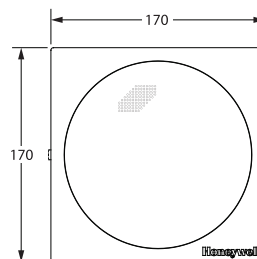
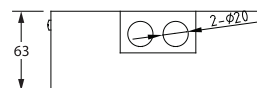
Installation/Configuration Notes

Mounting

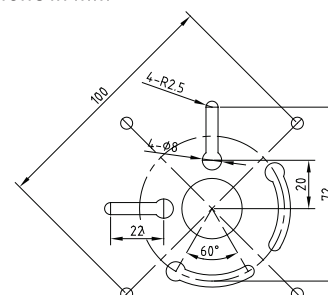
The loudspeaker is designed for quick and simple installation. First, mount the back can on the wall or on the junction box using the rear screw slots. Cable can be entered from the rear or the side. Second, secure the grille cover with three side screws.

Power setting

There are four primary taps including 6W, 3W, 1.5W and 0.75W for your selection. The cable connector is mounted on the back cover for easy installation.

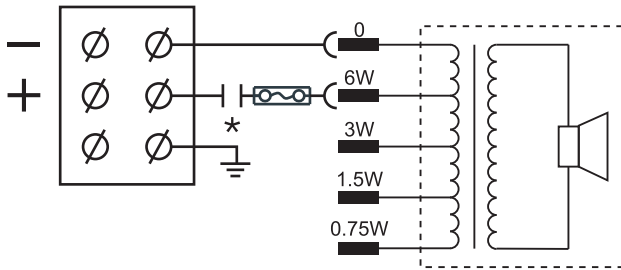


Dimensions in mm



Mounting dimensions in mm

Circuit Diagram



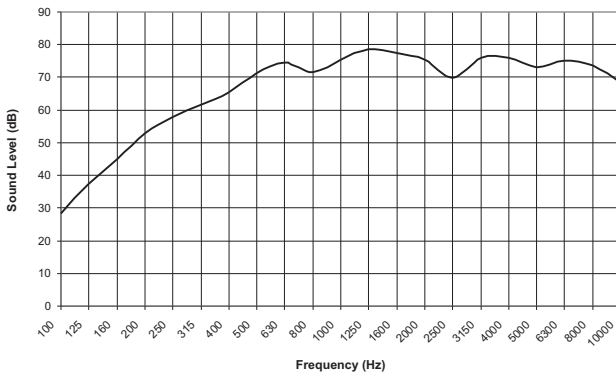
* unit fitted with capacitor

With transformer: 100V/70V line

	Red wire plus tapping				Black
100V	0.75W	1.5W	3W	6W	Com
70V	0.375W	0.75W	1.5W	3W	Com
IMP(Ω)	13K	6.7K	3.3K	1.7K	

Frequency Response

Frequency Response at 100 volt/4m, 1/3 oct smoothing

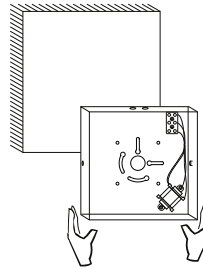


Dispersion angles

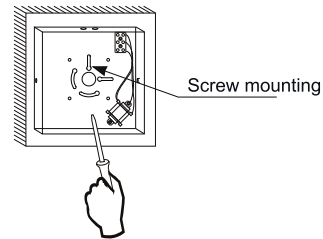
		Horizontal	Vertical
1 oct. pink noise	500 Hz	226°	226°
1 oct. pink noise	1k Hz	175°	174°
1 oct. pink noise	2k Hz	85°	88°
1 oct. pink noise	4k Hz	96°	85°

Installation Instructions

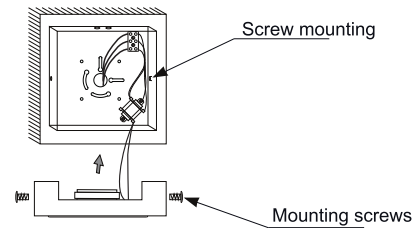
1. Attach the cabinet to flat surface.



2. Fix the cabinet with screws.



3. Select desired power and attach the front panel to the cabinet.



4. Fix the front panel to the cabinet with screws.

